


Coming Soon....

For our Visitors

Did you know that we have Godly Play / Children's Church available for children 3 years through 5th Grade, during Worship Service? Children are welcome to attend after the "Time with Children" in the Worship Service. We also have a Nursery available for children under age 3.

WRPC Walking Group

 Every Tuesday, weather permitting! We will gather at 9:00 am at the Greenbelt Holston Valley Drive Trailhead entrance. If there is a change in plans, we will send out an email to let you know where we will be walking.



SMILE for the month of February

Our wish list includes new or gently used plus-sized clothing, 2X-5X clothing all sizes and new fidget toys.



Loving Each Other (LEO) Valentine's Pancake/Lunch

Sunday, February 11, 12:00pm after Worship
This luncheon is coordinated by Rachel Lawson and open to all our church family. Please call the church office to let us know how many people to expect so we can be sure to have enough pancakes. See you February 11!

WRPC Weekly Calendar

Sunday 2/4	9:45am Sunday School 11:00am Worship Service / Communion / 5 Cents-a-Meal
Monday 2/5	6:00pm Youth Group, YS
Tuesday 2/6	9:00am Walking Group, meet at Holston Valley Trailhead 11:00am Staff Meeting, ZOOM 6:00pm The Has Beens
Wednesday 2/7	1:00pm ZOOM Bible Study 7:00pm Chancel Choir Practice
Thursday 2/8	12:00pm Worship Committee, ZOOM
Friday 2/9	10:00am Food Pantry, FH



Waverly Road Presbyterian Church

Love God Love Others Make Disciples

Service of Worship

February 4, 2024, 11:00 am

Acolyte

Evie Crow

WRPC Staff

Pastor | Collin Blair Adams

Pastor Emeritus | Daniel Clark

Director of Music | Dr. Kate Stubbs

Business and Communications
Administrator | Amy Boyles

Director of Intergenerational Discipleship |
Rachel Lawson

Director of Student (K-12)
Discipleship Ministries | Trinity Gibson

Sexton | Renea Insalago

Follow us on:   

1415 Waverly Road Kingsport, TN 37664 423.247.5121 www.waverlyroadpc.org

Immortal, Invisible, God Only Wise 12

1 Im - mor - tal, in - vis - i - ble, God on - ly wise,
 2 Un - rest - ing, un - hast - ing, and si - lent as light,
 3 To all, life thou giv - est, to both great and small.
 4 Thou reign - est in glo - ry; thou dwell - est in light.

in light in - ac - ces - si - ble hid from our eyes,
 nor want - ing, nor wast - ing, thou rul - est in might:
 In all life thou liv - est, the true life of all.
 Thine an - gels a - dore thee, all veil - ing their sight.

most bless - ed, most glo - rious, the An - cient of Days,
 thy jus - tice, like moun - tains high soar - ing a - bove;
 We blos - som and flour - ish like leaves on the tree,
 All praise we would ren - der; O help us to see

al - might - y, vic - to - rious, thy great name we praise.
 thy clouds, which are foun - tains of good - ness and love.
 then with - er and per - ish; but naught chang - eth thee.
 'tis on - ly the splen - dor of light hid - eth thee!

The opening line of this hymn was inspired by the three divine attributes listed in 1 Timothy 1:17 (King James Version), and it continues by considering how God's life exceeds our own finite existence. The text is well set to a Welsh melody shaped by many three-note units.

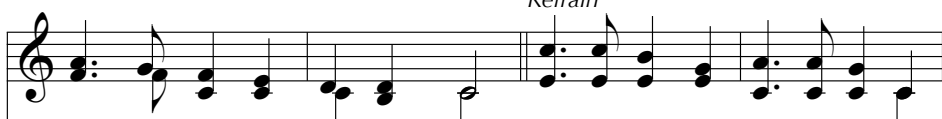
315 In the Midst of New Dimensions



1 In the midst of new di - men - sions, in the face of
 2 Through the flood of starv - ing peo - ple, war - ring fac - tions,
 3 As we stand, a world di - vid - ed by our own self -
 4 We are man and we are wom - an, all per - sua - sions,
 5 Should the threats of dire pre - dic - tions cause us to with -



chang - ing ways, who will lead the pil - grim peo - ples
 and de - spair, who will lift the ol - ive branch - es?
 seek - ing schemes, grant that we, your glob - al vil - lage,
 old and young, each a gift in your cre - a - tion,
 draw in pain, may your blaz - ing phoe - nix spir - it

*Refrain*

wan - dering in their sep - arate ways?
 Who will light the flame of care?
 might en - vi - sion wid - er dreams. God of rain - bow, fi - ery pil - lar,
 each a love song to be sung.
 res - ur - rect the church a - gain.



lead - ing where the ea - gles soar, we your peo - ple, ours the jour - ney



In this simultaneously-created text and tune, the author-composer was seeking to incorporate imagery from both Native American and Hebrew spiritual traditions. Also included is the mythological phoenix, which had received a Christian interpretation as early as the first century.

THE CHURCH

now and ev - er, now and ev - er, now and ev - er - more.

The image shows a musical score for the hymn 'THE CHURCH'. It consists of two staves. The top staff is in treble clef and contains a vocal line with lyrics. The bottom staff is in bass clef and contains a piano accompaniment line. The lyrics are 'now and ev - er, now and ev - er, now and ev - er - more.' The music is written in a simple, hymn-like style with a steady rhythm.