

## Coming Soon....

### For our Visitors

Did you know that we have Godly Play / Children's Church available for children age 3 through 3rd Grade, during Worship Service? Children are welcome to attend after the "Time with Children" in the Worship Service. We also have a Nursery available for children under age 3.

### Youth Group

**Mondays, 3:00–5:15pm**

You never know what Trinity will have in store for WRPC kids after school on Mondays! You know, it's going to be something fun!

### WRPC Blessing Box

**1401 Prospect Drive**

Drive by and check out our Blessing Box! Is it empty? Is it full? Either way, bring an item or two to put in our blessing box! Non-perishable food items or hygiene items. Feminine products, particularly, are always needed. The cold weather is here so gloves and hats are great ideas too! This box is always open for receiving and giving!

### SMILE for March

March is the month for donating gently used sneakers of ALL sizes and NEW packs of diaper wipes!

Thanks so much for your support!



### NEW Prayer Room available

In the former parish nurse's office (off of the gathering space), you will find a "new" room. Come in and rest when you are struggling to find peace. A flowing rock fountain with a soft glow, an oil diffuser, a cushy chair, a Bible, and even a scripture reflection app or quiet music option will be there to help you. Whether you are grieving, anxious, or just feeling a bit lost, the room is there to give you a space to commune with our God on an individual and private basis. "Cast all your anxiety on Him, because He cares for you." 1 Peter 5:7

### Godly Play Banners

The banners you see in the hall beside the door of the Godly Play Room represent the Calendar of the Christian Year. The one you see represented with the blue or purple background and the white cross will be placed there for the next six Sundays of Lent as we get ready for the Mystery of Easter. This banner is inspired by two lessons, **The Faces of Easter and The Mystery of Easter.**

## WRPC Weekly Calendar

<b>Sunday 3/20</b>	9:45am In-Person Sunday School, Preschool through Grade 12 11:00am Sunday Worship Service ( <i>Godly Play Children's Church in Room 102</i> ) 7:00pm Session
<b>Monday 3/21</b>	3:00pm Youth Group
<b>Tuesday 3/22</b>	9:00am United Way Citizens Review Board Panel Mtg., MR 6:00pm Has Beens Practice, FH
<b>Wednesday 3/23</b>	1:00pm ZOOM Bible Study 6:00pm Handbells 7:00pm Chancel Choir Practice
<b>Thursday 3/24</b>	6:00pm Stephen Ministry – ZOOM
<b>Friday 3/25</b>	10:00am Food Pantry, FH

### Acolyte

Madison Wilson

### WRPC Staff

Pastor | Collin Blair Adams

Pastor Emeritus | Daniel Clark

Director of Music | Dr. Kate Stubbs

Organist | Susan Whipple

Business and Communications  
Administrator | Amy Boyles

Director of Intergenerational Discipleship |  
Rachel Lawson

Director of Student (K-12)  
Discipleship Ministries | Trinity Gibson

Sexton | Renea Insalago

Follow us on:    



# Waverly Road Presbyterian Church

Love God Love Others Make Disciples

## Service of Worship

March 20, 2022, 11:00 am

1415 Waverly Road Kingsport, TN 37664 423.247.5121 [www.waverlyroadpc.org](http://www.waverlyroadpc.org)



## 435 There's a Wideness in God's Mercy

1 There's a wide-ness in God's mer-cy, like the wide-ness  
2 For the love of God is broad-er than the mea-sures

of the sea. There's a kind-ness in God's jus-tice,  
of the mind. And the heart of the E-ter-nal

which is more than lib-er-ty. There is no place where earth's  
is most won-der-ful-ly kind. If our love were but more

sor-rows are more felt than up in heaven. There is no place  
faith-ful, we would glad-ly trust God's Word, and our lives re-

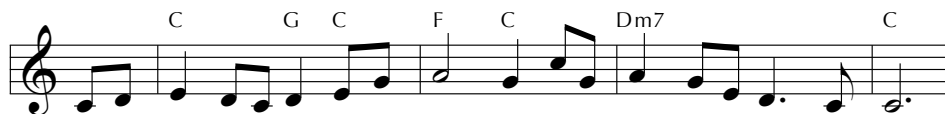
where earth's fail-ings have such kind-ly judg-ment given.  
flect thanks-giv-ing for the good-ness of our Lord.

These stanzas, excerpted from quite a few more, offer a reminder that the model for our dealings with others should be God's generosity rather than limited human tolerance. The text is effectively set to a broad and sturdy Dutch folk melody, probably from the 17th century.

## 800 Sometimes a Light Surprises



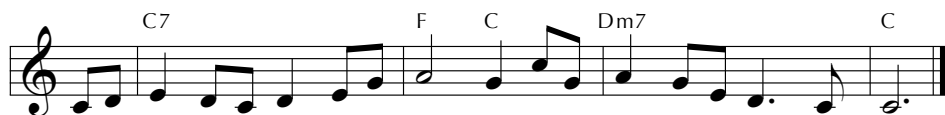
1 Some - times a light sur - pris - es the child of God who sings;  
 2 In ho - ly con - tem - pla - tion we sweet - ly then pur - sue  
 3 It can bring with it noth - ing but he will bear us through;  
 4 Though vine nor fig tree nei - ther their longed - for fruit should bear,



it is the Lord who ris - es with heal - ing in his wings;  
 the theme of God's sal - va - tion and find it ev - er new;  
 who gives the lil - ies cloth - ing will clothe his peo - ple, too;  
 though all the fields should with - er, nor flocks nor herds be there,



when com - forts are de - clin - ing, he grants the soul a - gain  
 set free from pres - ent sor - row, we cheer - ful - ly can say,  
 be - neath the spread - ing heav - ens no crea - ture but is fed;  
 yet God the same a - bid - ing, his praise shall tune my voice;



a sea - son of clear shin - ing to cheer it af - ter rain.  
 "Let the un - known to - mor - row bring with it what it may."  
 and he who feeds the ra - vens will give his chil - dren bread.  
 for while in him con - fid - ing, I can - not but re - joice.

This is one of the few hymns rooted in what can happen during worship, and that experience—gaining a spiritual insight while singing—is no less possible now than when this text was written in the 18th century. It is set here to a folk song variously labeled Irish or English.