

# The Newsheet

## Waverly Road Presbyterian Church

www.waverlyroadpc.org wrpc@waverlyroadpc.org 423.247.5121 Office Hours: Monday-Thursday, 8:00 am – 4:30 pm, Friday, 8:00 am – 12:00 pm

### WELCOME TO WORSHIP



**October 20, 2024**

**In-Person and  
Online Worship Service  
at 11:00am**

**Click on either link for  
Sunday Worship Service**



[https://www.facebook.com/  
WaverlyRoadPresbyterian-  
Church/](https://www.facebook.com/WaverlyRoadPresbyterianChurch/)



[https://www.youtube.com/  
channel/  
UC1dv3U42u4jLlksq\\_71Foyg](https://www.youtube.com/channel/UC1dv3U42u4jLlksq_71Foyg)



### SCRIPTURES

**October 20, 2024**  
Mark 10:35-45

### Food Pantry WRPC

**SERVING EVERY FRIDAY  
from 10:00am–Noon.**

*A very special thanks goes out  
to all of our Food Pantry  
volunteers who are helping to  
FEED THE HUNGRY  
in our community.*



**You are loved. We are blessed!**



### From the desk of Pastor Collin...

**Greetings to you in the name of our Lord, Jesus Christ,**

I am back! Thank you all for the gift of sabbatical, it was a true blessing. The ability to unplug and just 'be' for six weeks is a privilege I did not take lightly. Now, I am back and ready to get back to being your pastor.

The Spirit blessed me during that time with so many ideas and nudges. I was able to look at different problems and challenges from many different angles. I am bursting with hope for our future here at Waverly Road. I desperately want to talk about it with you all, one on one and in groups.

So, now that I am back, come and bug me! Stop by the office. Call me and tell me to come over. Let us talk, dream, and pray together. I am excited to see where the Spirit is leading us in our discipleship to Jesus Christ.

May God continue to bless,

*—Rev. Collin*

**Let's Talk,  
Dream &  
Pray Together!**



## PRAYER REQUESTS

### People in our Prayers

Rev. Dan Clark	Laci, Nicholas &
Holston Camp	Robin Lodal
Doris Blanchard Family	Ann Kibler
Ted Germroth	Kirk and Lola Finch
Benjamin Salyer	Travis & Kathy Adams
Sue Hall	(Collin's parents)
(Steve Hall's mother)	Chuck Green
Mike Lewis	Marty Qualls
Sharon Petke	Linda Dillon
Conner Caldwell Family	Betty Fritz
Lynda Snook	

### Missions in our Prayers—4th Quarter

#### Local Missions

Meals on Wheels  
Waverly Road Childcare Center  
CarePortal

#### Regional / National Missions

UKirk (ETSU)

#### International Missions

Moyo wa Afrika, Tanzania

*We will leave names on the Prayer Request List for three weeks unless you notify the Church Office to remain on the list for an extended amount of time.*



## This Week at WRPC

**Indoor and Online Worship at 11:00am.**

<b>Sunday 10/20</b>	9:45am	Sunday School
	11:00am	Worship Service / Pledge Sunday
	7:00pm	Session, MR
<b>Monday 10/21</b>	6:00pm	Youth Group, YS
	7:00pm	Enneagram Journey Class, MR
	7:00pm	Mission Committee, ZOOM
<b>Tuesday 10/22</b>	9:00am	Walking Group, Greenbelt Holston Valley Trailhead Entrance
	6:00pm	Has Beens, FH
<b>Wednesday 10/23</b>	1:00pm	ZOOM Bible Study
	5:30pm	WRPC Fall Festival
	7:00pm	Chancel Choir Practice
<b>Friday 10/25</b>	10:00am	Food Pantry, FH

## All God's Children Church Retreat at Holston Camp has been CANCELLED.

**Update: Holston Camp and Retreat Center (Banner Elk, NC)**

Holston Camp had trees fall on nine buildings. Their zip lines and mountain slide were destroyed. Two docks were lost along with roof panels on the boat house. They lost over 100 trees and that is preventing them from reaching certain parts of the camp. They may not have power for three weeks. Updates will be found on their [Facebook page](#). You can support their recovery efforts by going to their [website](#).



### Montreat Conference Center and community grapple with effects of Helene 'Montreat will be forever changed by this event' by Darla Carter | Presbyterian News Service

When word began to circulate that western North Carolina had suffered massive damage from Hurricane Helene, one of the landmarks that came to the mind of many Presbyterians was Montreat Conference Center.

Tucked away in a secluded mountain cove, less than 30 miles east of Asheville the conference center has been the site of many Presbyterian gatherings over the years for groups like the Presbyterian Association of Musicians (PAM).

The conference center and its campus took a wallop from the storm and, in the immediate aftermath, shifted to be an emergency and information hub for the community, supporting the town staff in their efforts to locate residents and gain access to homes.

Meanwhile, it has received an outpouring of support from past visitors of the center concerned about the staff and the surrounding community.



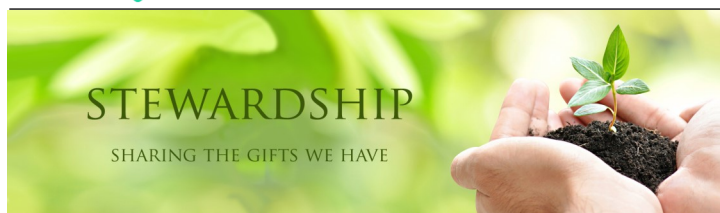
"Montreat will be forever changed by this event," said Seth Hagler, vice president for development. "Our roads, our bridges, our buildings, our park, hiking trails — there is no part of Montreat that wasn't affected by this storm, except for the feelings that people have about us and the importance of this place."

As of Friday, events and retreats have been canceled through Oct. 26, and several staff members are working remotely, Hagler said. The goal is to be "up and operational" as soon as possible, once power and water service is restored. (Continued on next page)



### SMILE for the Month of October

Our wish list for October includes new or gently used coats and hoodies, and new stocking stuffer items.



### Pledge Sunday is October 20!

**This Sunday, we will give our stewardship pledge to be dedicated during the service. Please fill out your pledge form and place it in the basket during the final hymn. If you need a pledge card, let us know.**



### Join us for the WRPC Fall Festival Wednesday, October 23 5:30-7:30pm in the

Come ready for some grilled out hotdogs and chili, costume contest, trick or treat games/prizes for the kids and a cake walk for everyone!





Views from the

# FOOD PANTRY

by Peter Lodal

**October 20–26, 2024**



We began October with a normal delivery of 47 bags. We will see how all the other disruptions in East Tennessee impact our numbers.

I had the opportunity to tour Second Harvest's new commercial kitchen, which we helped support through the MAP last year. It has only recently been completed, and they planned to ramp up its use this fall. And how! Since September 27th, they have shipped 19 tractor-trailer loads of hot meals to Carter and Unicoi counties, the hardest hit areas in Tennessee. I thank all of you for your generosity to the MAP program and helping make this happen.

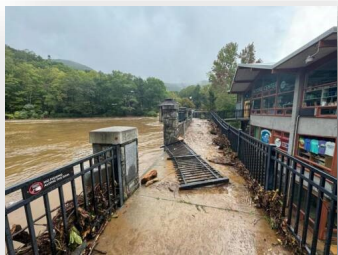
We delivered 34 bags this past Friday, slightly below our average.

My thanks to all of you who covered during our recent travel.

As always, thank you for your support and prayers.

—Pete Lodal

## Montreat Conference Center, cont'd.



In recent days, the center, which receives about 30,000 guests, conference attendees and cottagers a year, has been the site of multiple community informational meetings for the Montreat area, which suffered catastrophic flooding when Lake Susan and Flat Creek

swelled to historic levels after Helene in late September.

A meeting was held at the conference center earlier this week to connect local churches and organizations with Presbyterian Disaster Assistance, which is making deployments to multiple states and presbyteries.

"Our DNA is hospitality, and to be able to extend that to persons who are coming and working in western North Carolina, in Black Mountain and in Montreat is just what we do," Hagler said. "We know that people are eager to help, and we are creating a structure for those groups to be on site when the time is right, including offering some low-cost house options for work groups" coming to the region.

The conference center "continues to collaborate with area agencies and churches to support the recovery in a variety of ways," according to its website.

"We have become a repository for donated items of need and have made space available to Black Mountain Presbyterian Church," which is where the conference center is sending people who want to donate supplies and food. Also, "we are transporting needed supplies through these partners to other impacted neighborhoods beyond the Gate," the update notes.

The center also is continuing "to host the group Cajun Navy 2016, a trained disaster recovery outfit that is performing essential tasks both in Montreat and around the Swannanoa Valley," according to the update. (See drone footage of devastation to Swannanoa and surrounding parts of North Carolina on the website of "The Citizen Times.")

Helene barreled into North Carolina about a week ago after having made landfall Sept. 26 in Florida's Big Bend area, causing damage not only in that state but in multiple others, such as Tennessee, Georgia and South Carolina. More than 200 people have died, according to news reports, including at least 60 in North Carolina.

The storm triggered massive storm surge, heavy rain and flooding, wind damage and mudslides. In various affected areas, it also washed away roads, homes and bridges, damaged various buildings and infrastructure, and ravaged Montreat's normally picturesque landscape.

"Lake Susan, our parks, and grounds were hit hard, but the dam held throughout," according to the conference center's website, which notes that all staff are safe, but some have experienced "significant losses in property, and in at least one case, the loss of a family member to the flood waters. We are working to assure our staff of conference center support in their recovery and to connect them to the Board of Pensions and other resources."

There also has been an abundance of general concern. "People who love Montreat and come to Montreat have reached out from all over the country," expressing kind thoughts and sending gifts, Hagler said.

In a message on its website, PAM refers to Montreat as "a cherished space that has touched the lives of many within our organization, denomination, and beyond."

The note, which also mentions the Montreat Restoration Fund, goes on to say, in part, "We hold those who have lost loved ones in our prayers, as well as those who have been displaced from their homes and businesses due to the storm's impact."

According to The New York Times, Helene already is the deadliest tropical cyclone to hit the U.S. mainland since 2005, when 1,400 people lost their lives to Hurricane Katrina. And the number of deaths from Helene is expected to rise.

"There's going to be a long recovery from this storm in several states," said Kathy Broyard, executive director of the Florida Presbyterian Disaster Assistance Network.

Montreat's Restoration Fund can be found here. Those who would like to donate to the hurricane response of Presbyterian Disaster Assistance can click here, or text HELENE24 to 41444.

Waverly Road Presbyterian Church  
1415 Waverly Road  
Kingsport, TN 37664-2520

The Newsheet (permit 445-550) is published weekly by Waverly Road Presbyterian Church, 1415 Waverly Rd., Kingsport TN 37664-2520. Periodicals postage paid at Kingsport TN. Postmaster: send address changes to The Newsheet, 1415 Waverly Rd., Kingsport TN 37664-2520.



Mark your calendars for our  
**Trick-or-Treating  
Event with Lincoln  
Elementary School!**

Thursday, October 31  
Time: 9:00am-12:30pm

Contact Rachel Lawson to  
volunteer and start  
scouting those candy deals!



### Planning a Meeting or Event?

If you have a  
scheduled  
meeting or event  
here at the  
church after  
hours, please

sign the board in the entryway to the Gathering  
Space and Church Office. That way, we  
will know who is in the building.



### Bible Study Resumes!

Join us every Wednesday at 1:00pm  
for ZOOM Bible Study. We will send out the  
information how to tune in and join study  
and conversation!